



Sunbeam College for Women

Autonomous Post Graduate College
Accredited 'A' Grade by NAAC
BHAGWANPUR, VARANASI-221005 (U.P.)



Courses at a Glance

Your Future, Our Commitment

Courses & Eligibility

M.Com



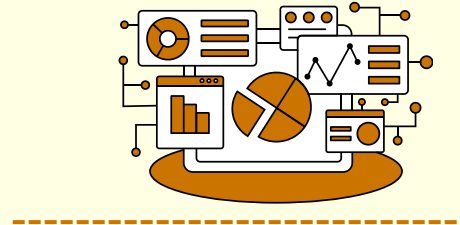
3 yr Graduate degree (B.Com./B.Com. (Hons.) with 45% of marks

B.Com Hons.



Intermediate (10+2) in any stream with 45% of marks

B.Com



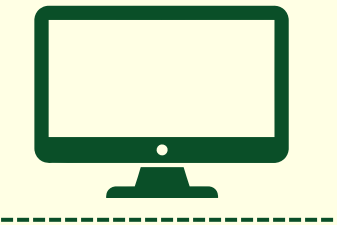
Intermediate (10+2) in any stream with 45% of marks

BBA



Intermediate (10+2) in any stream with 45% of marks

BCA



Intermediate (10+2) with 45% of marks

B.Sc.



Intermediate (10+2) in Bio Group / Maths Group with 45% of marks

BA



Intermediate (10+2) in any stream with 45% of marks

ADMISSION PROCEDURE

01 Application Procedure

- Admission form to be procured from College Office. (Admission Form Fee: Rs. 1200)
- Duly filled online Admission form to be submitted at College office along with supporting testimonials within specified time period.
- Collect the Counselling slip after submitting the Admission form.

02 Counselling

- Appear for counselling as per the date specified in the Counselling slip.
- Documents to be brought:
- Class X & XII Marksheet (Original)
 - Aadhar Card
 - Graduation Certificate/Final Year Marksheet for PG course

03 Registration for Admission

- Shortlisted students to register for Admission by submitting the registration form at fee counter to pay fee.
 - Collect Almanac, I-Card, Fee-Card & Syllabus.
- Documents to be submitted:
- Transfer Certificate (Original) - Character Certificate (Original)
 - 4 Passport size photographs - Migration Certificate (Original)
 - Digilocker and Aaar ID - Other Certificates (if any)

04 Transport

- Fill the transport form (if applicable) and submit at fee counter and collect the acknowledgment slip.

SCHOLARSHIP / CONCESSION

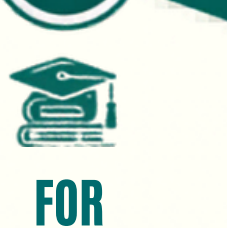
01



FOR BBA/BCA-I

90% and above	8,000 off on total fee.
80% and above	7,500 off on total fee.
75% and above	5,000 off on total fee.

02



FOR B.COM. & B.SC.-I

90% and above	4,000 off on total fee.
80% and above	3,000 off on total fee.
75% and above	2,000 off on total fee.

03



FOR BA

90% and above	3,000 off on total fee.
80% and above	2,000 off on total fee.
75% and above	1,000 off on total fee.

04



CONCESSION FOR IN-SERVICE, DEFENCE STAFF
7,500 off in total fee

CONCESSION TO THE STUDENTS OF SIKH MINORITY
2,000 off in total fee

PHYSICALLY HANDICAPPED STUDENTS
6,000 off in total fee

STUDENTS OF SC/ST
2,000 off in total fee

(for New Admission)

COLLEGE FEE STRUCTURE

Ist & IInd Sem.

Course	Total Fee Per Year	1st Installment of Annual Fees At the time of admission	2nd Installment of Annual Fees 30th October 2026	3rd Installment of Annual Fees 30th December 2026	4th Installment of Annual Fees 28th February 2027
M.Com	₹ 59,500 *	₹ 20,520 + Transport Maintenance Charges	₹ 13,000 +	₹ 13,000 + Transport Maintenance Charges	₹ 13,000 +
B.Com Hons.	₹ 69,120 *	₹ 22,900 + Transport Maintenance Charges	₹ 15,400 +	₹ 15,410 + Transport Maintenance Charges	₹ 15,410 +
B.Com DataAnalytics & Business Intelligence, IoA, United Kingdom	₹ 1,14,120 *	₹ 34,150 + Transport Maintenance Charges	₹ 26,650 +	₹ 26,660 + Transport Maintenance Charges	₹ 26,660 +
BBA	₹ 79,680 *	₹ 25,540 + Transport Maintenance Charges	₹ 18,040 +	₹ 18,050 + Transport Maintenance Charges	₹ 18,050 +
BCA	₹ 80,280 *	₹ 25,690 + Transport Maintenance Charges	₹ 18,190 +	₹ 18,200 + Transport Maintenance Charges	₹ 18,200 +
B.Sc	₹ 71,780 *	₹ 23,570 + Transport Maintenance Charges	₹ 16,070 +	₹ 16,070 + Transport Maintenance Charges	₹ 16,070 +
BA	₹ 54,300 *	₹ 19,200 + Transport Maintenance Charges	₹ 11,700 +	₹ 11,700 + Transport Maintenance Charges	₹ 11,700 +

*Admission Fee of ₹5,000 is included in the 1st installment; a one-time Career Counseling Fee of ₹2,000 is charged in the 1st installment of the 1st year and is applicable for all 3 years, while Training & Placement Fee of ₹1,000 and Software Solution Fee of ₹700 are charged annually and included in the 1st installment of each year.

IIIrd & IVth Sem.

Course	Total Fee Per Year	1st Installment of Annual Fees At the time of admission	2nd Installment of Annual Fees 30th October 2026	3rd Installment of Annual Fees 30th December 2026	4th Installment of Annual Fees 28th February 2027
M.Com	₹ 54,860 *	₹ 14,090 + Transport Maintenance Charges	₹ 13,590 +	₹ 13,590 + Transport Maintenance Charges	₹ 13,590 +
B.Com Hons.	₹ 64,960 *	₹ 16,610 + Transport Maintenance Charges	₹ 16,110 +	₹ 16,120 + Transport Maintenance Charges	₹ 16,120 +
B.Com DataAnalytics & Business Intelligence, IoA, United Kingdom	₹ 1,09,960 *	₹ 27,860 + Transport Maintenance Charges	₹ 27,360 +	₹ 27,370 + Transport Maintenance Charges	₹ 27,370 +
BBA	₹ 76,060 *	₹ 19,390 + Transport Maintenance Charges	₹ 18,890 +	₹ 18,890 + Transport Maintenance Charges	₹ 18,890 +
BCA	₹ 76,680 *	₹ 19,540 + Transport Maintenance Charges	₹ 19,040 +	₹ 19,050 + Transport Maintenance Charges	₹ 19,050 +
B.Sc	₹ 67,760 *	₹ 17,310 + Transport Maintenance Charges	₹ 16,810 +	₹ 16,820 + Transport Maintenance Charges	₹ 16,820 +
BA	₹ 49,400 *	₹ 12,720 + Transport Maintenance Charges	₹ 12,220 +	₹ 12,230 + Transport Maintenance Charges	₹ 12,230 +

Vth & VIth Sem.

Course	Total Fee Per Year	1st Installment of Annual Fees At the time of admission	2nd Installment of Annual Fees 30th October 2026	3rd Installment of Annual Fees 30th December 2026	4th Installment of Annual Fees 28th February 2027
B.Com Hons.	₹ 68,940 *	₹ 17,360 + Transport Maintenance Charges	₹ 16,860 +	₹ 16,860 + Transport Maintenance Charges	₹ 16,860 +
BBA	₹ 80,600 *	₹ 20,270 + Transport Maintenance Charges	₹ 19,770 +	₹ 19,780 + Transport Maintenance Charges	₹ 19,780 +
BCA	₹ 81,260 *	₹ 20,440 + Transport Maintenance Charges	₹ 19,940 +	₹ 19,940 + Transport Maintenance Charges	₹ 19,940 +
B.Sc	₹ 71,880 *	₹ 18,090 + Transport Maintenance Charges	₹ 17,590 +	₹ 17,600 + Transport Maintenance Charges	₹ 17,600 +
BA	₹ 52,600 *	₹ 13,270 + Transport Maintenance Charges	₹ 12,770 +	₹ 12,780 + Transport Maintenance Charges	₹ 12,780 +

TRANSPORT MAINTENANCE CHARGE

Within city - Rs. 26700/month
(In 2 equal installments)

Ramnagar - Rs. 3000/month

Mughalsarai - Rs. 4000/month

LAST DATE & LATE FEE FINE

Last Date to pay the 1st Installment - 31st Aug.'26 (for provisional admission) + Transport Maintenance Charges & for 2nd Installment + Transport Maintenance Charges is 30th Nov'26 & for 3rd Installment is 31st Jan'27 + Transport Maintenance Charges for 4th Installment + Transport Maintenance Charges is 30th Mar'27.

1,000 in addition to late fee Rs. 300 p.m. will be payable in case of default exceeding three months.

Seat Acceptance charges: 7,000/- (NON REFUNDABLE)